

N.E. 1/4
SECTION 32, T.6N., R.2W., S.L.B. & M.

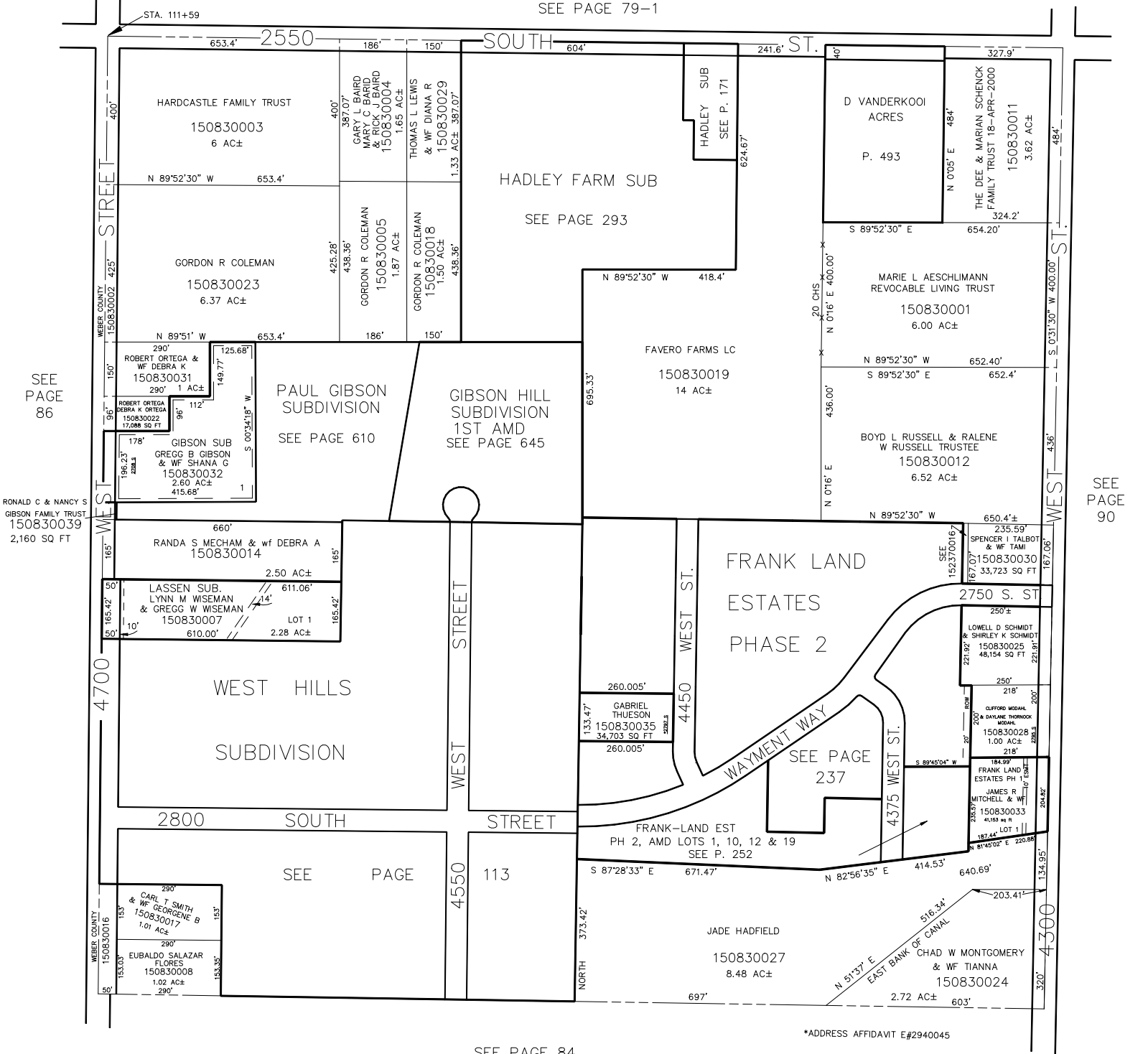
IN WEBER COUNTY

SCALE 1" = 200'

SEE PAGE 79-1

TAXING UNIT: 516

STA. 111+59



SEE PAGE 86

RONALD C & NANCY S
GIBSON FAMILY TRUST
150830039
2,160 SQ FT

SEE PAGE 90

SEE PAGE 84

*ADDRESS AFFIDAVIT E#2940045